

AAA on an
OEC 9900
Elite



AAA Stent
Graft on an
OEC 9900
Elite



Bolus Chase
of Lower
Extremities
on an OEC
9900 Elite



Motion
Tolerant
Subtraction
of Lower
Extremities
on an OEC
9900 Elite

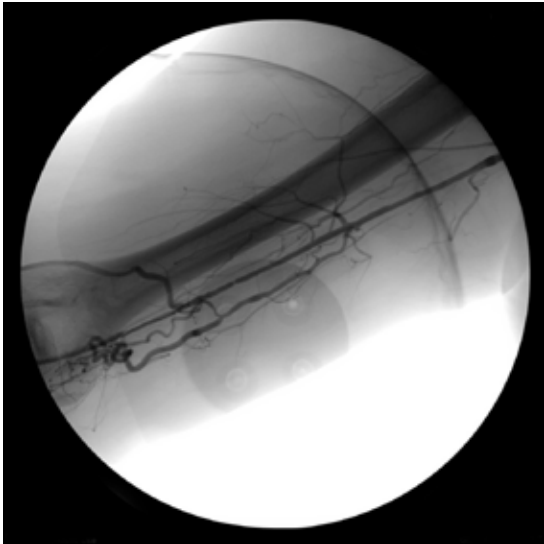


Roadmap
of Lower
Extremities
on an OEC
9900 Elite

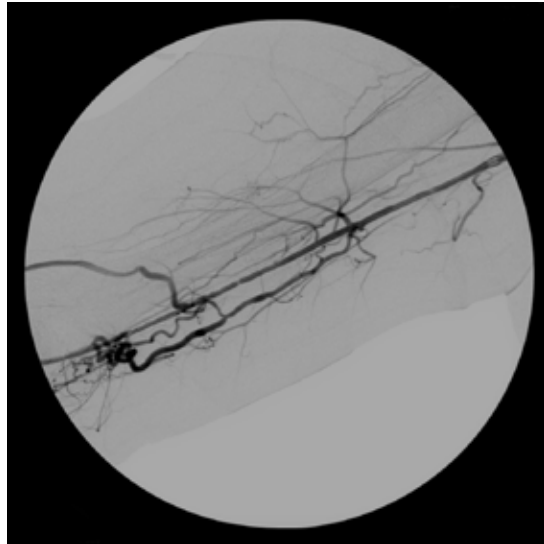


Carotid DSA
on an OEC
9900 Elite

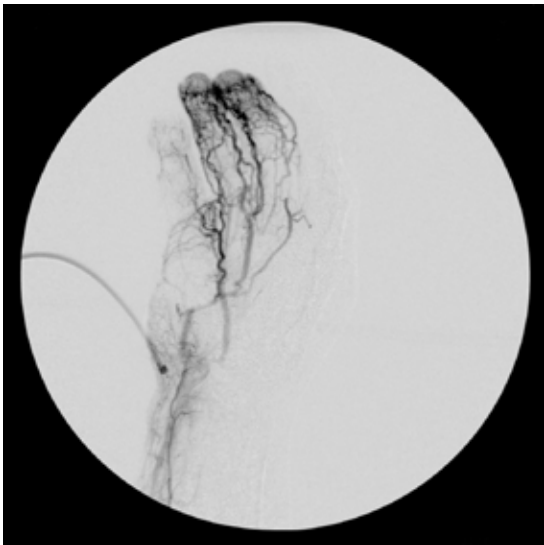




Fluoroscopy of Upper Extremities on an OEC 9900 Elite



DSA of Upper Extremities on an OEC 9900 Elite



DSA of Hand on an OEC 9900 Elite



AV Fistula of Upper Extremities on an OEC 9900 Elite

384 Wright Brothers Drive
Salt Lake City, UT 84116
USA

www.gehealthcare.com

©2009 General Electric Company — All rights reserved.

General Electric Company reserves the right to make changes in specifications and features shown herein, or discontinue the product described at any time without notice or obligation. Contact your GE representative for the most current information.

GE, GE Monogram, and OEC are trademarks of General Electric Company.

GE OEC Medical Systems, Inc., a General Electric company, going to market as GE Healthcare.

**GE Healthcare,
Surgery — Americas**
Phone: 801-328-9300
Fax: 801-328-4300

GE Healthcare — Europe
Paris, France
Fax: 33-1-30-70-94-35

GE Healthcare — Asia
Tokyo, Japan
Fax: +81-452-85-5490

Hong Kong
Fax: +852-2559-3588



imagination at work